

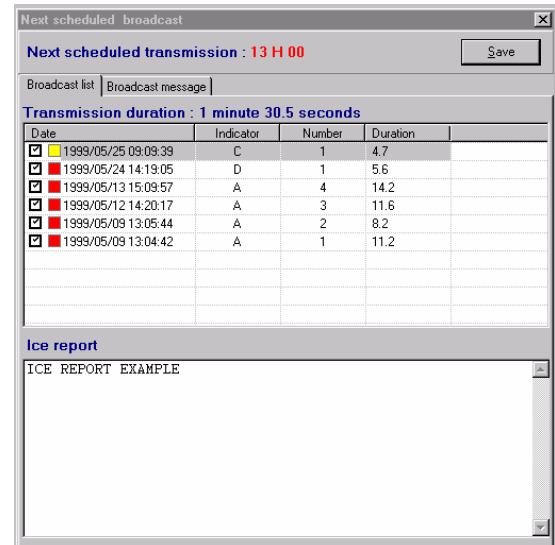
MF & HF Frequency Bands

MARITIME SAFETY INFORMATION SERVICE (NAVTEX)

This software module has been developed to handle NAVTEX system services for MF frequency band, as required in GMDSS or for MF and HF NBDP systems to provide an additional service to EGC Safety NET.

Maritime Safety Information means navigational and meteorological warnings, meteorological forecasts and other urgent safety related messages.

Here, on the right side hand, is an example of the screen for the preparation of a broadcasting message. Note each message is displayed with the following information: Checkbox for the selection, Red or Yellow coloured icons (red means no filtering by the ship), Creation date, Subject indicator, Serial number of the message and duration indicator.



Features

- Conforms to latest version of ITU-R Recommendation M.540 for MF broadcasts and IMO-951 E.
- Controlling the MF NAVTEX services on 518 kHz for one or several radio sites.
- Extending to the National NAVTEX services on 4209.5 kHz or on 490 kHz.
- Programming the Transmitter identification character, and the FEC transmission & the audible alarm parameters.
- Connecting to the Weather Authorities via either serial links or telex lines for the automatic reception of messages.
- Managing the messages: VITAL, IMPORTANT, ROUTINE with the following capabilities: Insertion of the preamble & the final sequence, preparation modification & displaying of a broadcast, and storage.
- Controlling the manual and the automatic transmission of the broadcast.
- Processing the status and the progress of the transmission.
- Fully compatible with other modules of the maritime mobile service software system.

Technical aspects

The NAVTEX service is provided in the same way as any other service except that it is appropriated to use a dedicated Service Handling Position.

The Service Handling Position can handle NAVTEX messages and broadcast calls. These calls are then transmitted using a FEC modem. In addition, the operator can edit, store and set up broadcasts at fixed times.

Required equipment

- PC with WINDOWS™ XP is recommended.
- Access Control and Switching Equipment (ACSE).
- Remote control equipment.
- MF transmitter (518 kHz).
- Either Navtex receiver or MF receiver.